

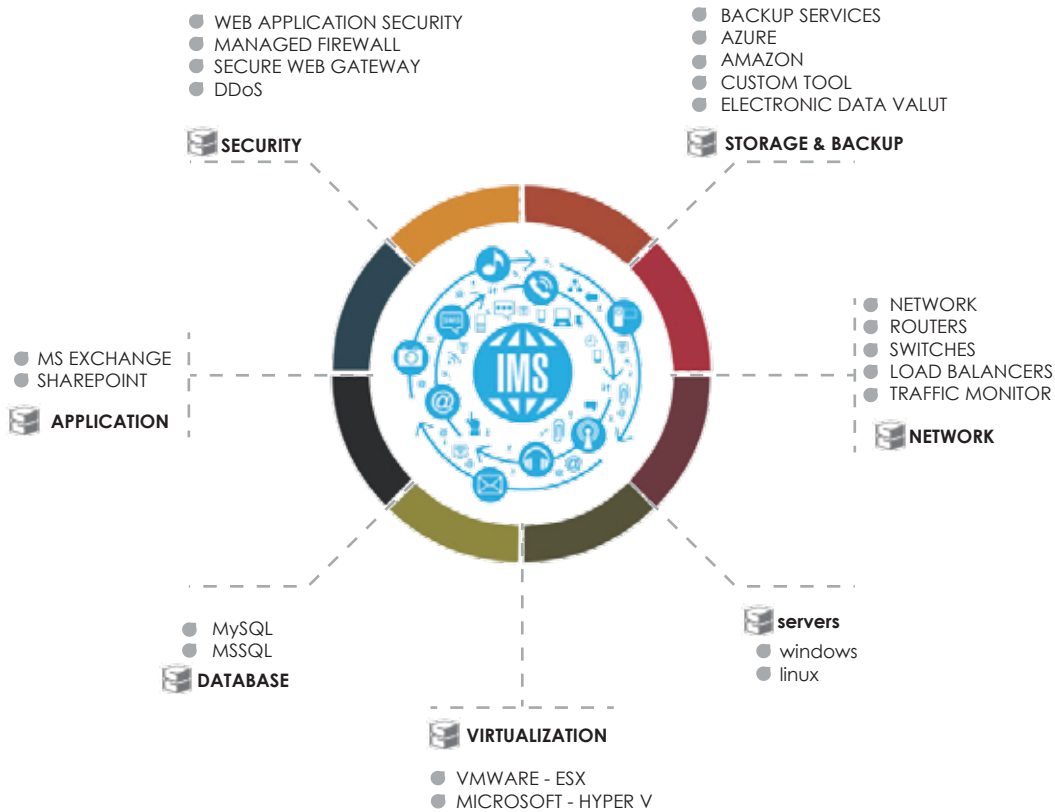
Rainbw

IT Services



Your business needs a stable and performant infrastructure that keep space with growth and ever changing needs. We help you with services and solutions to help you keep up with the demands and trends. Our Infrastructure Management Services are designed to monitor your IT infrastructure, constantly, using enterprise grade tools, proactively identifying and fixing faults before impacting your business.

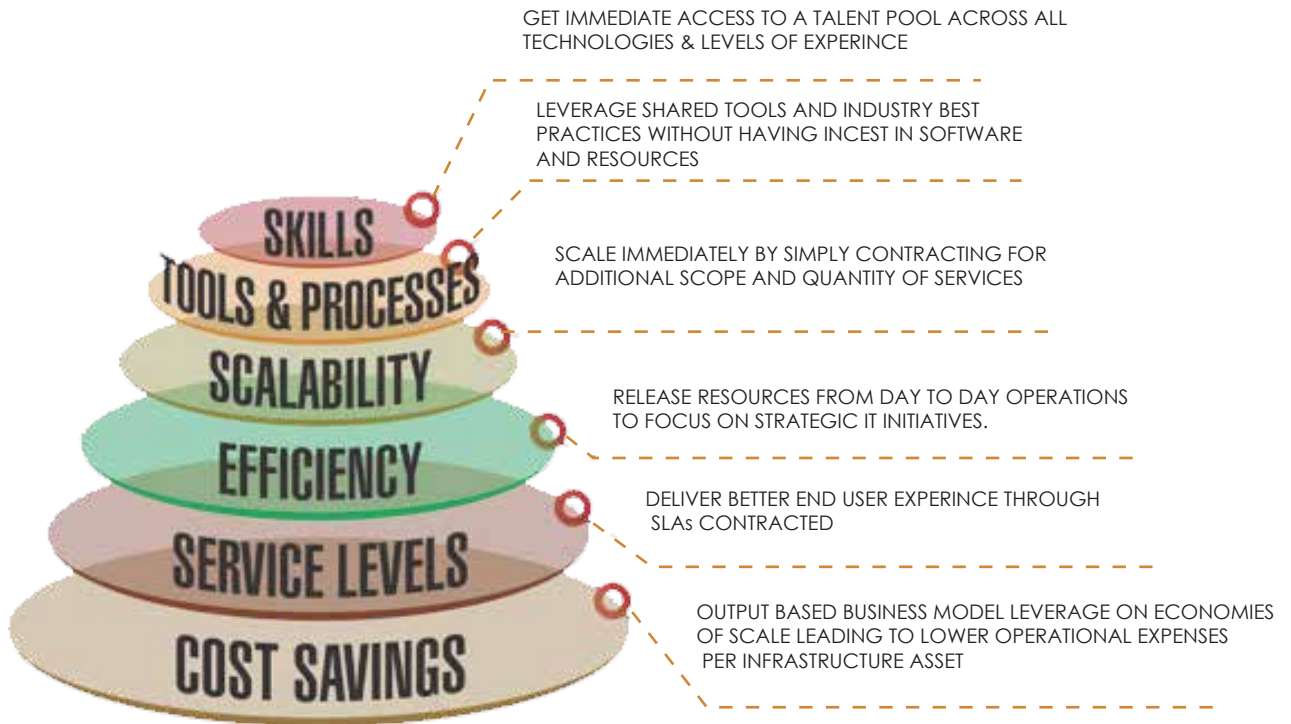
Infrastructure Areas Covered By Our IMS Team



With our infrastructure Management Services in place, your IT environment will be continuously managed and monitored for threats and issues.

Why should outsource your IT structure management requirements to Rainbow IT Services.

<p>HOSTING SERVICES</p> <ul style="list-style-type: none"> Dedicated Hosting Pre-Provisioned Servers Managed firewall Load Balancing Backup and Storage Disaster Recovery 	<p>WEB SITES</p> <ul style="list-style-type: none"> Design customization SEO Responsive Design Convert your Non - Responsive website to Responsive 	<p>APPLICATIONS</p> <ul style="list-style-type: none"> Hosted Exchange Linux Mail Application Migration to cloud environment and maintenance HMS Signature Templated Job Portal Face book Application Job Site and Facebook Setup of Company Page Web Security Management Medical Appointment System School Management System Custom Apps 	<p>Medical Services</p> <ul style="list-style-type: none"> HMS PACS Solutions Cloud or On Premises
--	---	---	--



	Starter	Enterprise
24 x 7 Availability Monitoring	✓	✓
Email alerts for system unavailability	✓	✓
Call alerts for system unavailability	✓	✓
Performance monitoring	✓	✓
Automated Reports(Availability, performance, capacity)	✗	✓
Automated probable cause analysis	✗	✓
Incident Management	✗	✓
System Administration	✗	✓
Change Management	✗	✓
Patch Management	✗	✓
Hardware vendor co-ordination	✗	✓



Contact Us :

Head Quaters

Rainbow Meditech Sdn Bhd (880592-K),

No: 18-1, Jalan 3/114, Kuchai Business Center,
Off Jalan Kuchai Lama, Kuala Lumpur 58200
MALAYSIA.

Phone: +6-03-79828518, +6-0102405768,
+6-0149465113, +6-0162214664

Fax : +6-03-79828544

Branches :

Rainbow Meditech

Wisma Rainbow, No: F-52, First Main Road,
Anna Nagar East, Chennai - 600102, INDIA
Phone: Ph: +91-44-26262060, +91-9840071001

Rainbow Meditech LLC (460636247)

2410 NW Eden Bower Blvd, Suite 176,
Roseburg, Oregon 97471, USA
Phone : +15 4153 792 80

Rainbow Meditech Pte Ltd (201316811K)

6 Eu Tong Sen Street,
The Central #11-03
Singapore 059817

info@rainbowmeditech.com | www.rainbowmeditech.com